



**INTERNATIONAL  
GEMOLOGICAL  
INSTITUTE**

**LABORATORY GROWN DIAMOND REPORT**

**IGI LABORATORY GROWN DIAMOND IDENTIFICATION REPORT**

April 2, 2022  
 IGI Report Number LG522234105  
 Description LABORATORY GROWN DIAMOND  
 Shape and Cutting Style CUSHION BRILLIANT  
 Measurements 6.32 X 4.95 X 3.28 MM

**GRADING RESULTS**

Carat Weight 0.90 CARAT  
 Color Grade D  
 Clarity Grade VS 1

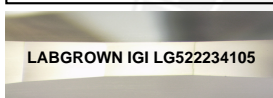
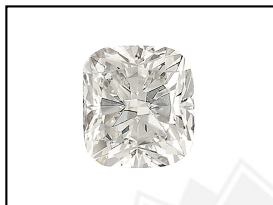
**ADDITIONAL GRADING INFORMATION**

Polish EXCELLENT  
 Symmetry VERY GOOD  
 Fluorescence NONE  
 Inscription(s) LABGROWN IGI LG522234105

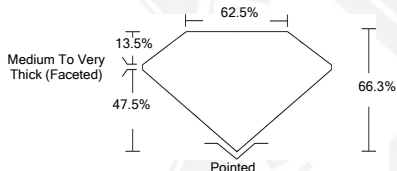
Comments: As Grown - No indication of post-growth treatment.  
 This Laboratory Grown Diamond was created by High Pressure High Temperature (HPHT) growth process.  
 Type II

**ELECTRONIC COPY LABORATORY GROWN  
DIAMOND REPORT**

**LG522234105**



**LASERSCRIBE<sup>SM</sup>**  
Sample Images Used



**IGI LABORATORY GROWN  
DIAMOND ID REPORT**

April 2, 2022  
 IGI Report Number **LG522234105**  
**CUSHION BRILLIANT**  
**6.32 X 4.95 X 3.28 MM**  
 Carat Weight 0.90 CARAT  
 Color Grade D  
 Clarity Grade VS 1  
 Polish EXCELLENT  
 Symmetry VERY GOOD  
 Fluorescence NONE  
 Inscription(s) LABGROWN IGI  
 LG522234105

Comments: As Grown - No indication of post-growth treatment.  
 This Laboratory Grown Diamond was created by High Pressure High Temperature (HPHT) growth process.  
 Type II

**IGI LABORATORY GROWN  
DIAMOND ID REPORT**

April 2, 2022  
 IGI Report Number **LG522234105**  
**CUSHION BRILLIANT**  
**6.32 X 4.95 X 3.28 MM**  
 Carat Weight 0.90 CARAT  
 Color Grade D  
 Clarity Grade VS 1  
 Polish EXCELLENT  
 Symmetry VERY GOOD  
 Fluorescence NONE  
 Inscription(s) LABGROWN IGI  
 LG522234105

Comments: As Grown - No indication of post-growth treatment.  
 This Laboratory Grown Diamond was created by High Pressure High Temperature (HPHT) growth process.  
 Type II

THIS DOCUMENT WAS PRODUCED WITH THE FOLLOWING SECURITY MEASURES: SPECIAL DOCUMENT PAPER, INK SCREENS, WATERMARK, BACKGROUND DESIGN, HOLOGRAM AND OTHER SECURITY FEATURES NOT LISTED AND DO EXCEEDED DOCUMENT SECURITY INDUSTRY GUIDELINES.

For Terms & Conditions and to verify this report, please visit [www.igi.org](http://www.igi.org)